

# **AMA TODAY**

**August 28, 2009**

The mission of AMA ESD  
is to serve and support student  
achievement.



# AMA ESD Strategic Plan



## Indicator 1: Support of Student Achievement

All programs and services are valued for enhancing student achievement while saving time and resources.



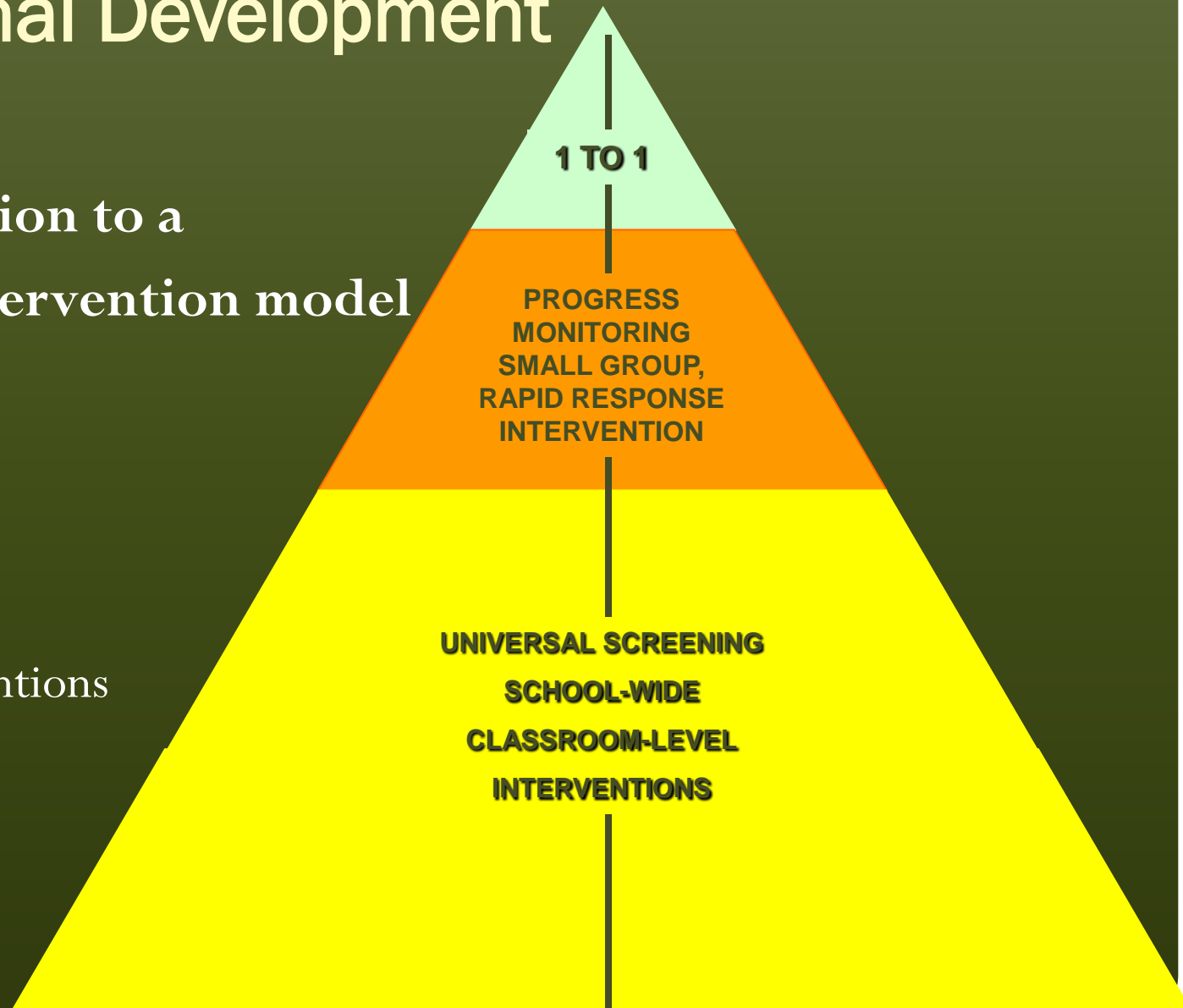
# Professional Development

- Offer professional development that is focused on high priority needs of our districts and that is sustained over time
  - Targeted Writing Project
    - Cohort
    - Pilot Schools
    - High School Model
  - Professional Learning Communities for Teachers
  - Response to Intervention
  - Administrators, Teachers, and AMA ESD staff
- Lead in the facilitation of Professional Learning Communities
- Explore Options for Embedding PD in School Day
  - Benefits of Professional Learning Communities
  - Administrative Study

# Professional Development

Lead the transition to a  
Response to Intervention model

- What is RTI
- Accountability
- RTI Model
- Tiered Interventions



# Professional Development

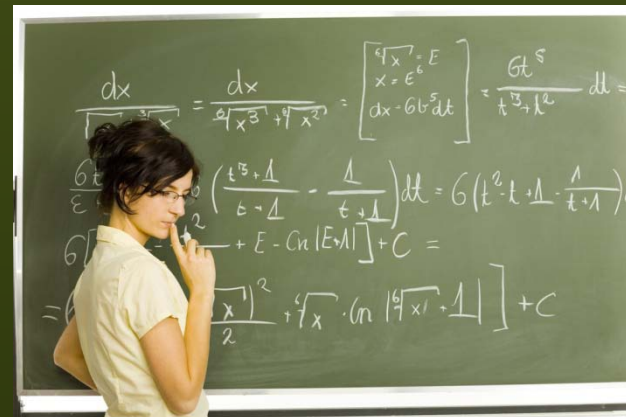
- Use both “local experts” (ESD staff trainers) and “professional experts” (outside presenters) to meet diverse training needs.
  - District –Wide Training
  - Local School Training
  - Modeling interventions
  - Participate in SAT Meetings
  - Out of District Training

# Professional Development

- Collaboration with community partners to maximize resources and increase impact.
  - Guest Speakers
  - Community Participation
  - Organizations/Boards

# Curriculum Development

- Develop a framework for curriculum development with a timeline and with clear goals.
- Facilitate the development of ESD-wide common curriculums, power standards, and common assessments for Mathematics, Science, English Language Arts, and Social Studies.



# ELA Curriculum Focus

- Individual mapping of grade level curriculums (7-11)
- Identifying “Power Standards” and writing “I can” statements (9-11)
- Vertical meetings aligning curriculum (9-11)
- Common-summative assessments (9<sup>th</sup> Grade)
- Administrative PLC study to consider structure for implementing common-formative assessments
- Identifying “Power Standards” and writing “I can” statements (K-6)

# Direct Student Services

- Develop and provide direct student programs and services which promote student achievement in the four core content areas of:
  - English Language Arts
  - Mathematics
  - Science
  - Social Studies

# Direct Student Services

- Provide appropriate, individualized interventions for students with special needs:
  - PPOC
  - Speech Therapy
  - Physical Therapy
  - Occupational Therapy
  - School Psychology Services
  - School Social Worker Services
  - Teacher Consultant Services-General & Special Education
  - Transition Services

# Technology

- Lead the research of and piloting of technology for teaching and learning
  - Exam View Assessment System
  - Digital Storytelling
  - Testwiz (data disaggregation)
  - Moodle (online classroom connection)
  - Virtual Field Trips
  - Online Learning / Credit Recovery

# AMA ESD Strategic Plan

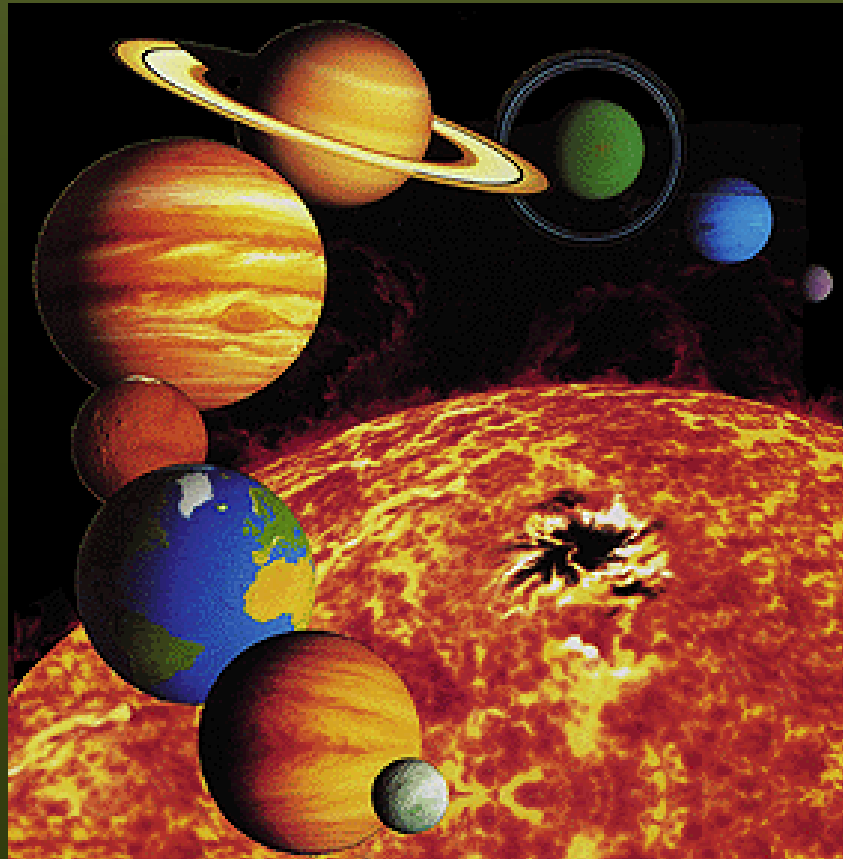


## Indicator 2:

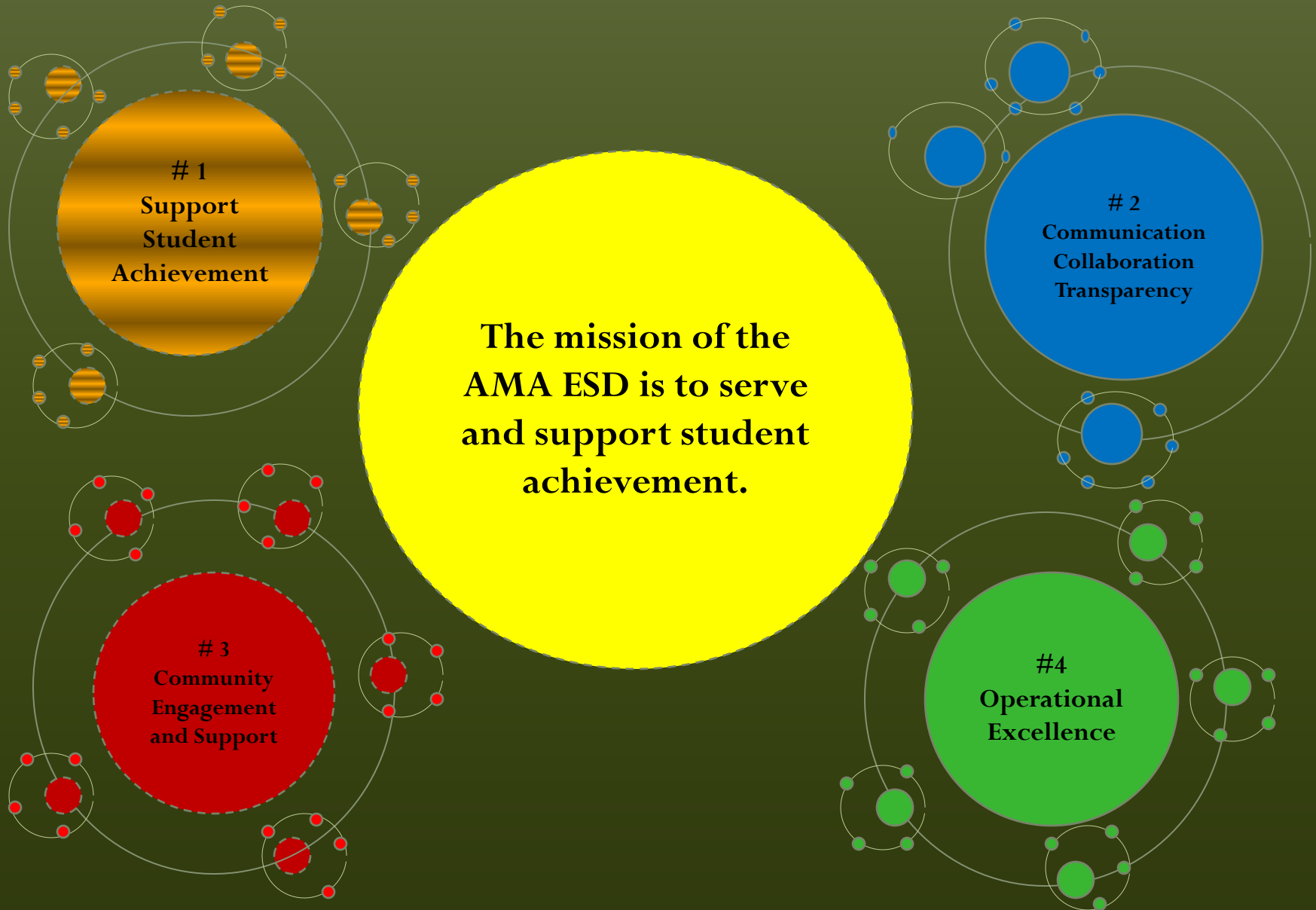
The ESD's Culture will reflect an attitude of communication, collaboration and transparency.



# Development of a Visual Representation of AMA's Strategic Plan and Related Current Initiatives



# AMA ESD's Stellar System



# Moons of Planet #1

- **Professional Development**

- Targeted Writing Project
- Professional Learning Communities for Teachers
- Response to Intervention
- Use both “local experts” (ESD staff trainers) and “professional experts” (outside presenters) to meet diverse training needs.

- **Curriculum Development**

- Develop a framework for curriculum development
- Facilitate the development of ESD-wide common curriculums, power standards, and common assessments in core areas.
- Administrative PLC to study common-formative assessments

# Moons of Planet #1 (continued)

## Direct Student Services

- Develop and provide direct student programs and services which promote student achievement in the four core content areas
  - Provide appropriate, individualized interventions for students with special needs
- 
- **Technology**
    - Lead the research of and piloting of technology for teaching and learning

# Planet #2

## A Focus



## on Collaboration

- Mental Health in Schools
- Developmental Assessment Clinic (DAC)
- Staff participation in service organizations
- Early Childhood Interagency Coordinating Council (ECICC)
- Great Start Collaborative
- Math/Science Center
- Discovery Zone
- Human Services Coordinating Councils

## Planet #2

A Focus on



Transparency

- Annual Report
- Strategic Planning Survey
- Open Board Meetings

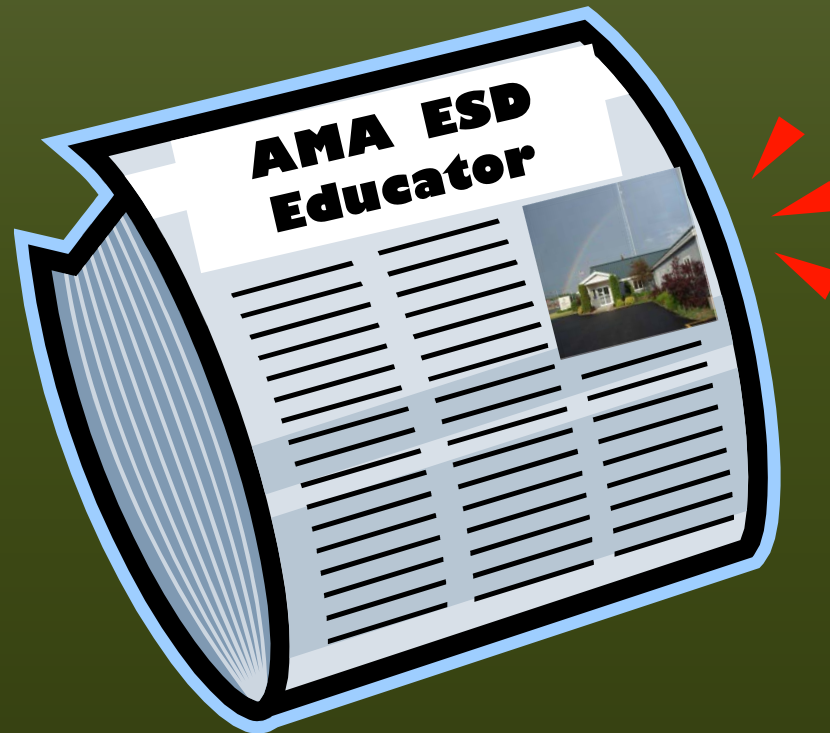
# Planet #2

A Focus on



Communication

Publish and Distribute Community-Wide a Publication Highlighting AMA's Strategic Plan, Services, Staff Members, and Students:

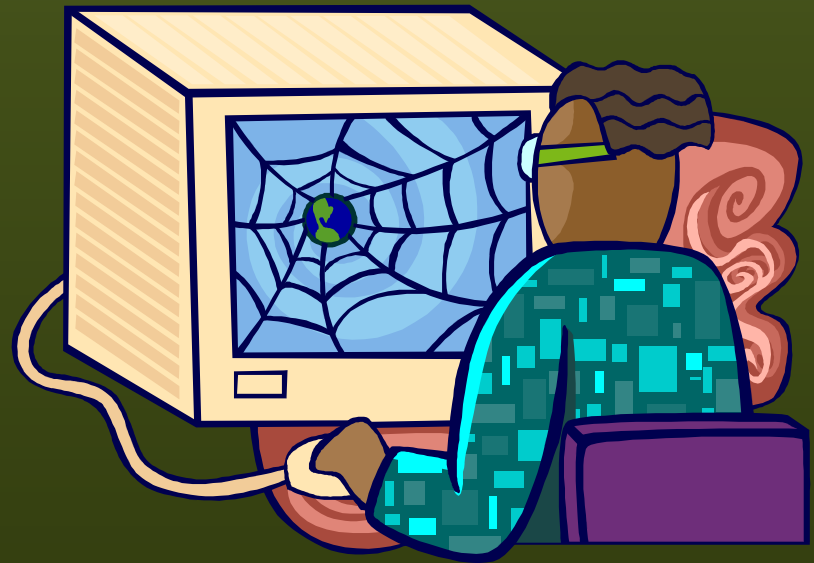


# Publication Process Plan:

- Investigate local options for assistance with the development of the publication
- Develop project timeline and budget
- Determine content (Strategic Plan, Annual Report Information, Articles about ESD programs and services spotlighting staff and students, etc.)
- Print and distribute publication to residents in all four ESD school districts

# Improve ESD Website

- Update Homepage
- Strategic Plan Goals and Strategies
- Current Relevant Programs
- Activities and Events



Systematically present information about AMA's strategic plan to AMA and locals school district staff members via staff meetings, newsletters, etc,

# Use E-Mail Blasts Sent to Constituent Groups on Important Issues



**Periodic Publication of an in-house  
newsletter for recognition of, and improved  
communication with ESD Staff members**



# AMA ESD Strategic Plan

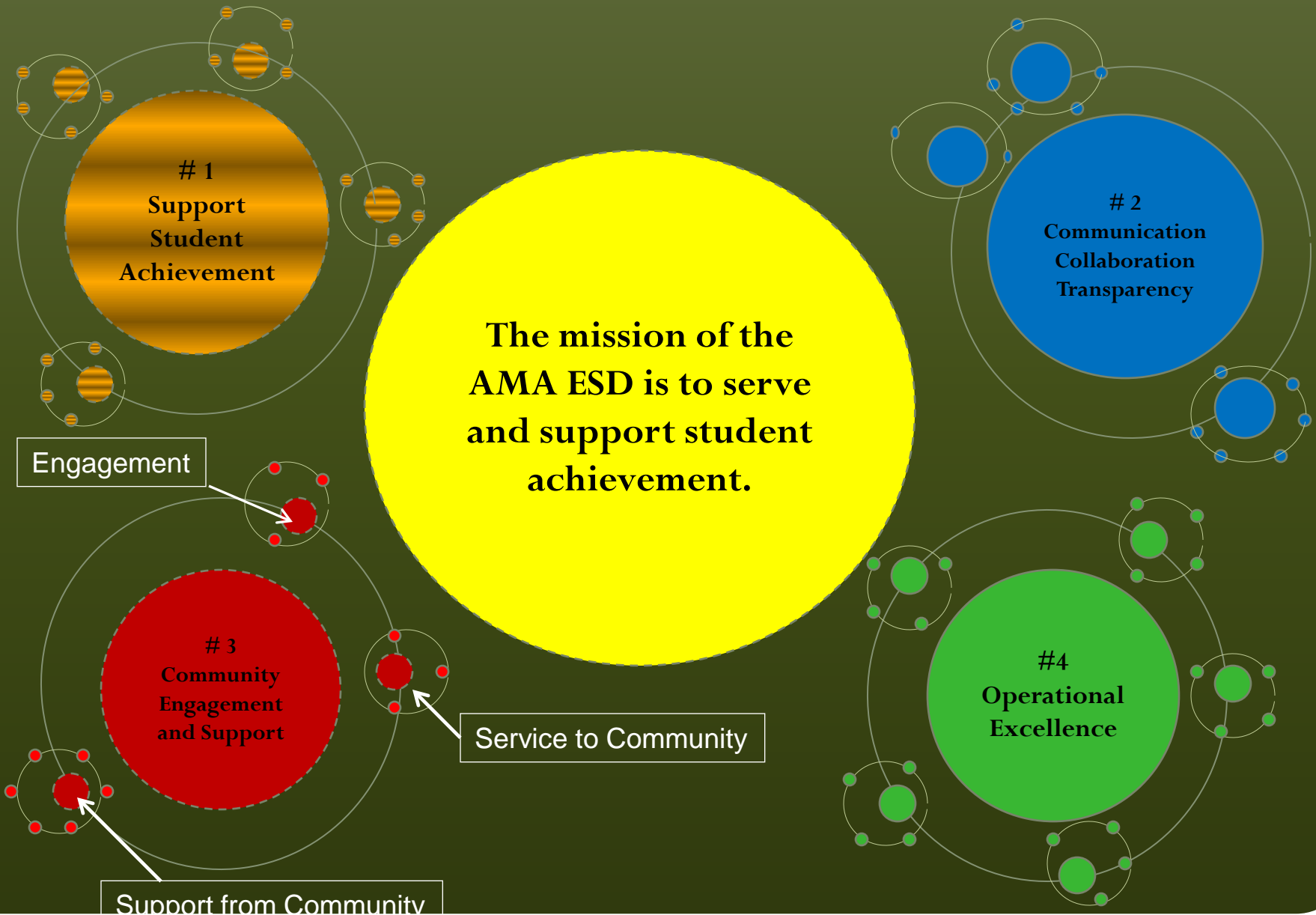


### **Indicator 3: Community Engagement and Support**

The ESD board and staff are viewed as valued community, regional and state partners; the ESD is supported by the community.



# AMA ESD's Stellar System



# A Focus on the Moon of Engagement



- Focused effort to engage media
- ESD Staff Speaker's Bureau
- Community Forums

# A Focus on the Moon of Service to the Community



- ESD volunteers within our counties
- ESD Christmas Party contributions
- High participation in United Way
- Participation and Leadership  
in Statewide and Regional Organizations
- Public Use of Conference Rooms

# A Focus on the Moon of Support from Community



- Active community member participation:
  - Piper Greenhouse sale
  - Christmas program
  - Fall & Winter Festivals
  - Sprinkler Lake Education Center projects
- Service Club monetary donations
- Foundation financial support
- Millage support
- Supported work experiences for students
- Special Olympics involvement

# AMA ESD Strategic Plan

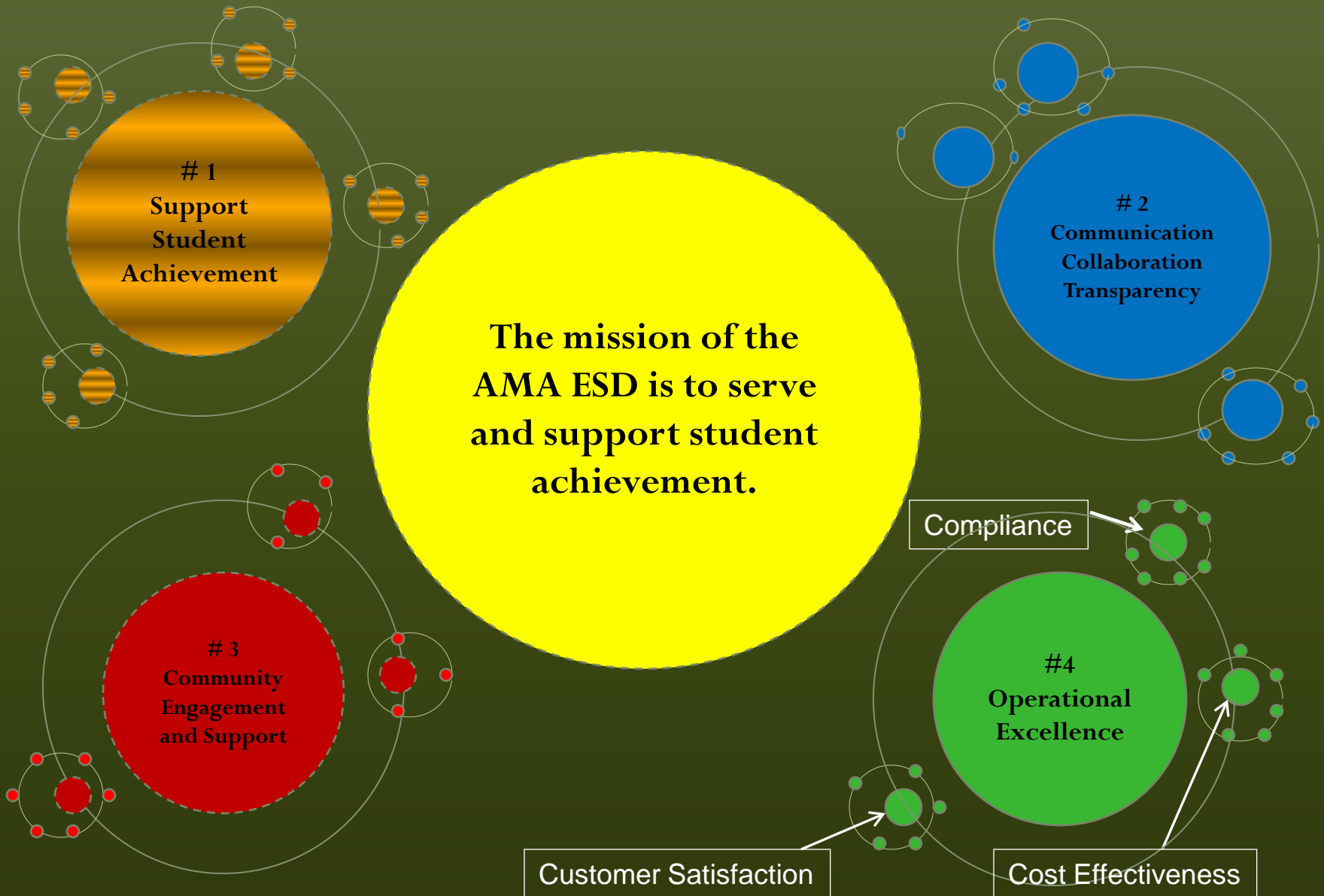


## Indicator 4: Operational Excellence

Every functional area of ESD operations will demonstrate best of field practice and continuous improvement.



# AMA ESD's Stellar System



# Operational Excellence

- Operations & Maintenance of Buildings
- Pupil Transportation
- Food Service
- Business Services
- Non-Instructional Technology
- Human Resources
- Pupil Accounting



# A Focus on the Moon of **Customer Satisfaction**



- Surveys
- Input from staff and customers
- Identification of strengths and weaknesses
- Develop an action plan
- Continuous evaluation for improvement

# A Focus on the Moon of **Cost Effectiveness**



- Networking/sharing of information
- Analysis of current practices
- Research best practices
- Discuss opportunities for collaboration
- Modify practices and provide training
- Continuous evaluation for improvement

# Examples of Collaboration

- Regular meetings with superintendents/business staff
- SDS consortium and support
- Assistance with summer tax collection
- CEO Imaging
- Substitute consortium
- District purchase cards
- Contracted pupil transportation
- Legislative consortium
- 403(b) consortium
- Many more...



# A Focus on the Moon of **Compliance**



- Understanding compliance expectations
- Internal reviews
- Audits
- Inspections
- Meeting timelines
- Training and communication
- Continuous evaluation for improvement